

Cloud publishing user manual

Catalogue

Cloud publishing user manual.....	1
Catalogue.....	1
1. Preparation:.....	2
2. Login to control platform.....	4
4.Upload resource.....	6
4.1 icon “Resource’.....	6
4.2 The resource list under “Program”.....	6
5.Program editing.....	7
5.1 DSS program editing.....	7
5.2 Interactive program editing.....	8
5.4 Format supporting.....	13
5.6 TouchButton & Container.....	14
5.7 Program import and export.....	15
6. Schedule, Sending and checked.....	16
Schedule can be arranged in 4 methods:.....	16
6.1 Send & Checked.....	17
6.2 “Scheduling” and “Schedule”.....	20
6.4 “Container” under “program ” editing.....	21
7. Central control management.....	21
7.1 Terminal management.....	21
7.1 Group.....	24
7.2.1 Role.....	25
7.2.2 User.....	25
7.2.3 Check.....	26
7.3 Desktop background setting.....	27
7.4 Desktop icon setting.....	27
7.5 Playing Statistic.....	27
8. Trouble shooting.....	28
8.1 After login,the terminal is grey color (not online).....	28
8.2 Use USB storage to import program,failed.....	28

1. Preparation:

1.1 Test link: <http://150.109.100.56>

Username: test

Password: test

Network: Wan,Lan,wifi,3G/4G

1.2 Video tutorial of CMS:

How to make multi programs loop playback-Marvel Technology

Link:<https://youtu.be/CEZUrSFgV9Q>

How to publish content to LCD display-Marvel Technology

Link:<https://youtu.be/CMStAUMwv1w>

how to set schedule on-Marvel Technology

Link:<https://youtu.be/yHz8nIJe-44>

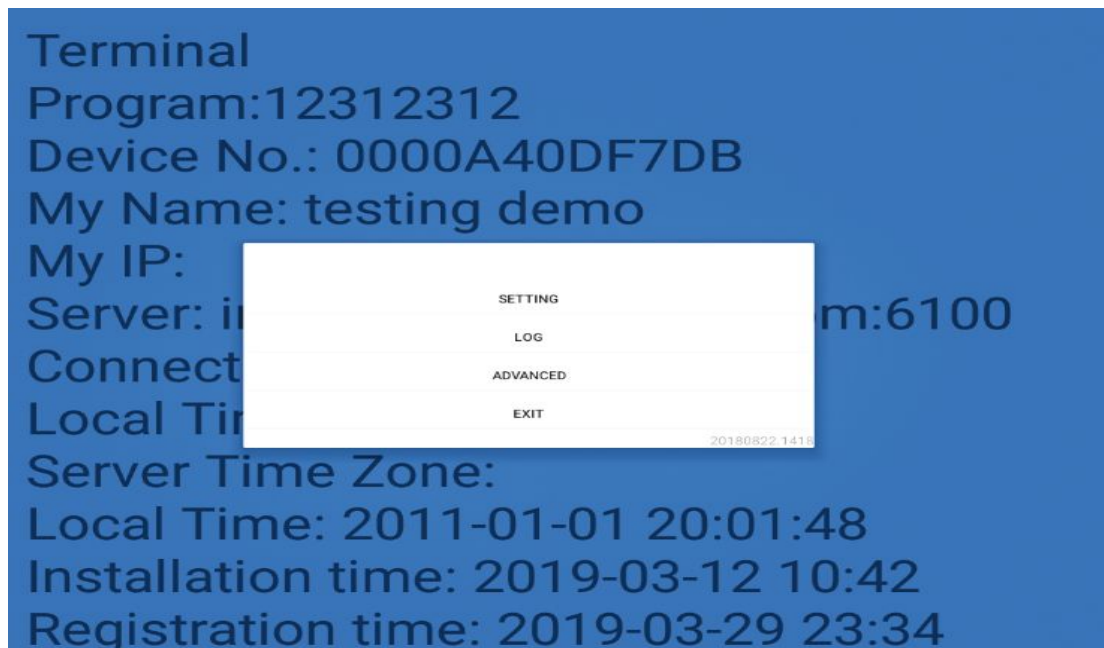
terminal-Marvel Technology

Link:<https://youtu.be/WDPfisEk7ug>

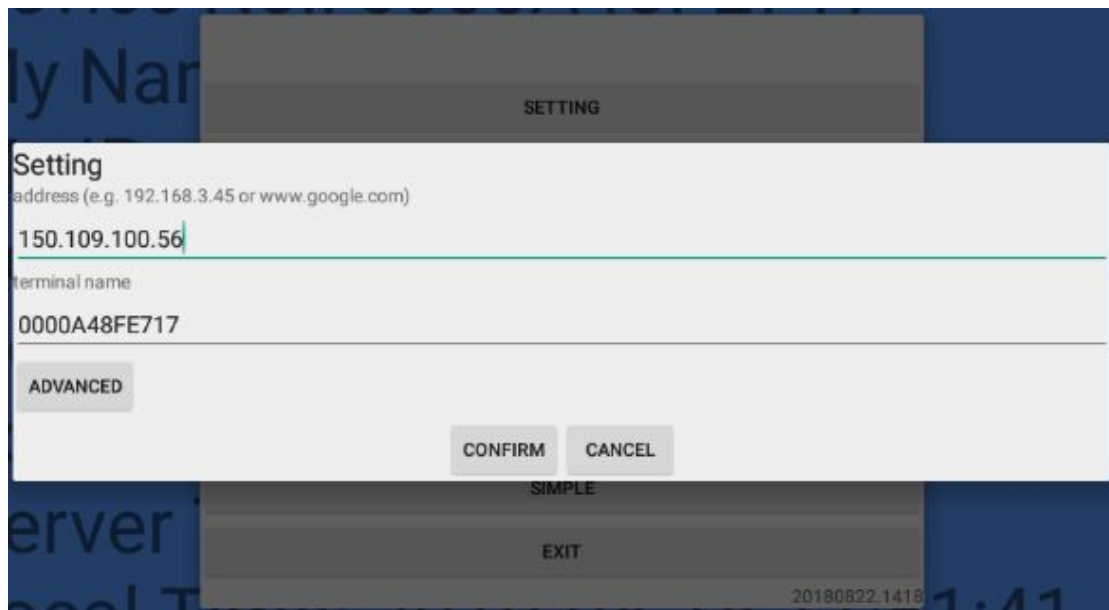
How to uploading resource-Marvel Technology

Link:<https://youtu.be/e0OfHwmAVyA>

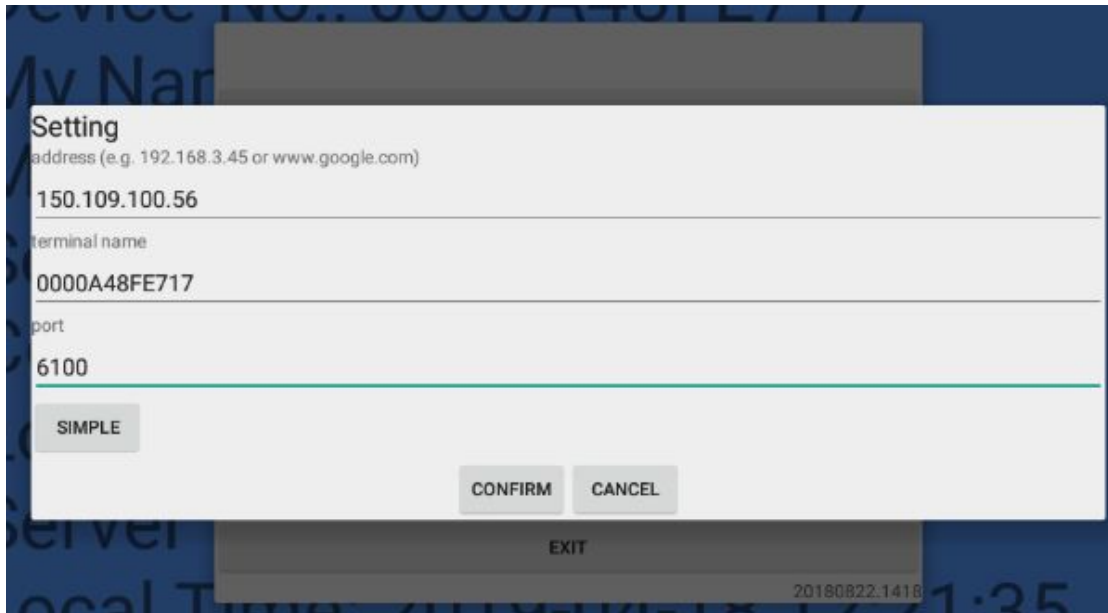
1.2.2. Double click right button on the mouse, or click the up right corner when the display with touch function then there is a prompt up a window as follows:



1.2.3. Click "setting" and input the IP address, and can modify the terminal name here. Ip address : 150.109.100.56



1.2.4 Click "advanced", you also need to set up the port, it should be: 6100



1.2.5 Then just keep this page running , and send this photo to seller of the display,cause they will give you authorization for display according to the photo info ,the picture is just like below



2. Login to control platform

I. Preparation:

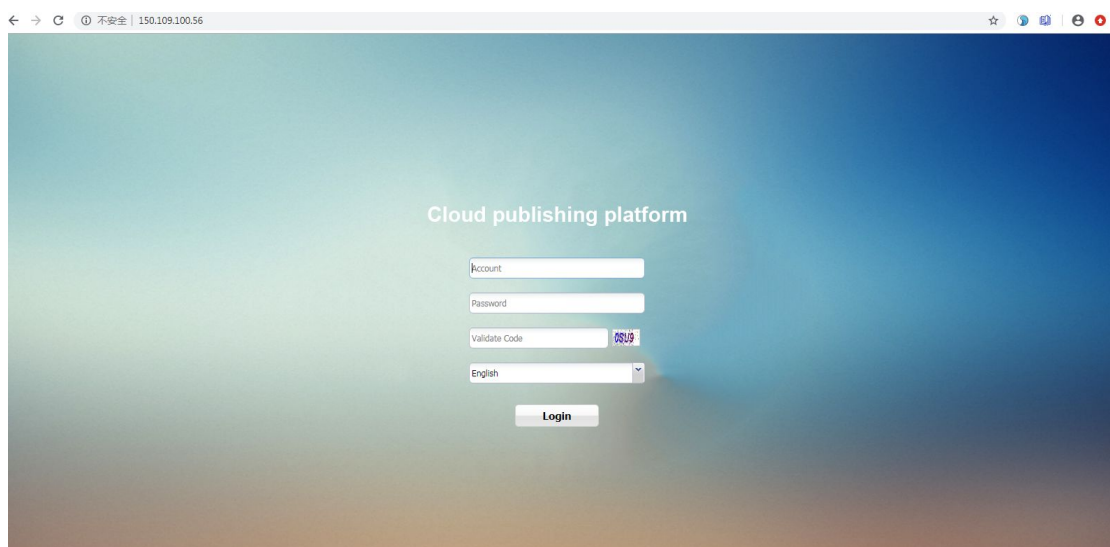
A. Network: make sure the server and terminal are on line.

B. Find the server (installed our software) IP address,and make sure the terminal side has input right IP address of the server.

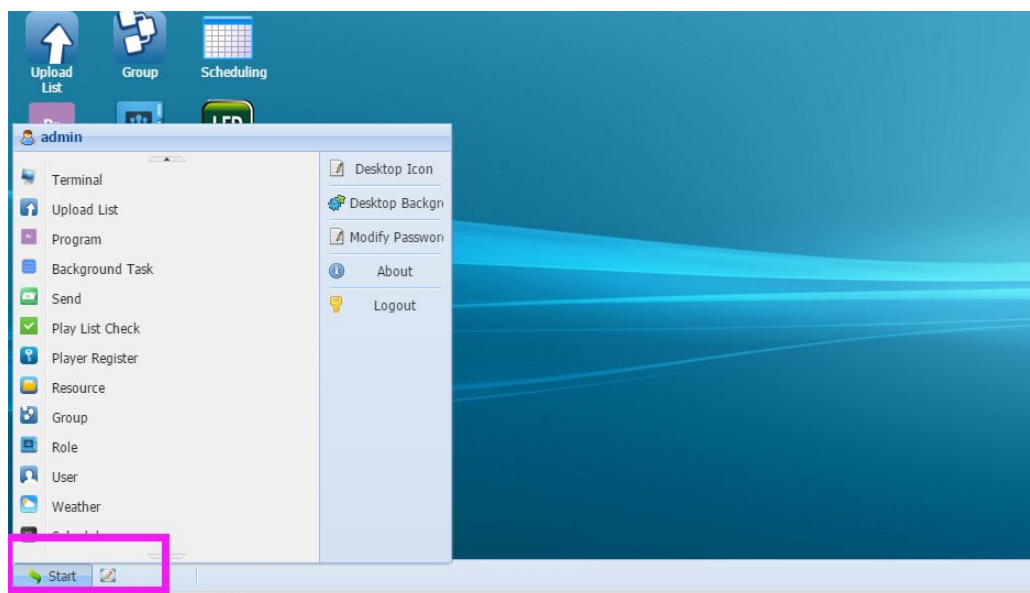
C. Make sure you have web browser on your pc.

II. Open Chrome, firefox web browser and Login in server

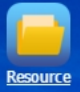
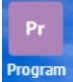
3. Open Chrome and input the address: <http://150.109.100.56>



3.1 Select language as you need (Optional language include Chinese,English and Russian),Then click “Login”,and the operation interface come out,pls click “start”--”desktop icon” to add more operation icons to the desk.

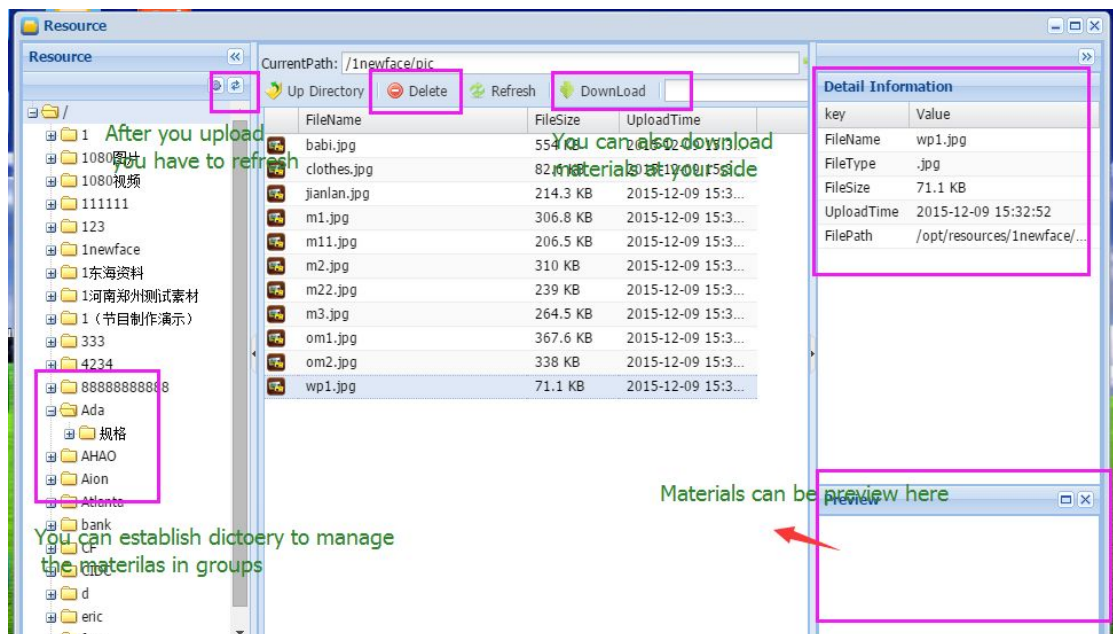


4.Upload resource

There are two way to upload materials: one is under icon , another is under icon 

4.1 icon “Resource”

After click icon “Resource”,you can upload,manage and download the materials here:

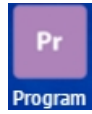


4.2 The resource list under “Program”

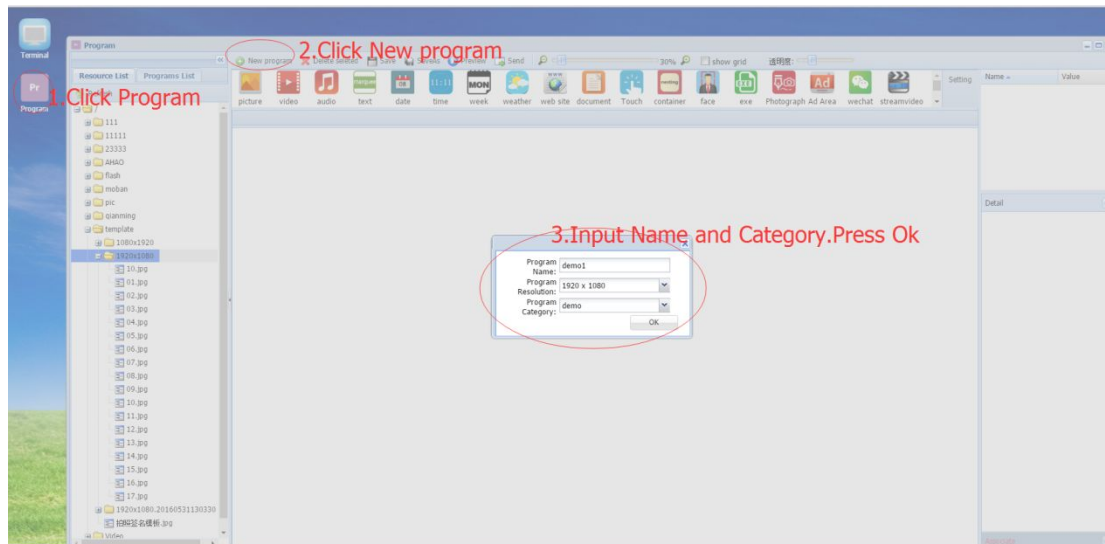
The resource list in the program editing interface, is mainly for the convenience of program editing in time. Here you can upload, group in directory and delete the materials.

5. Program editing

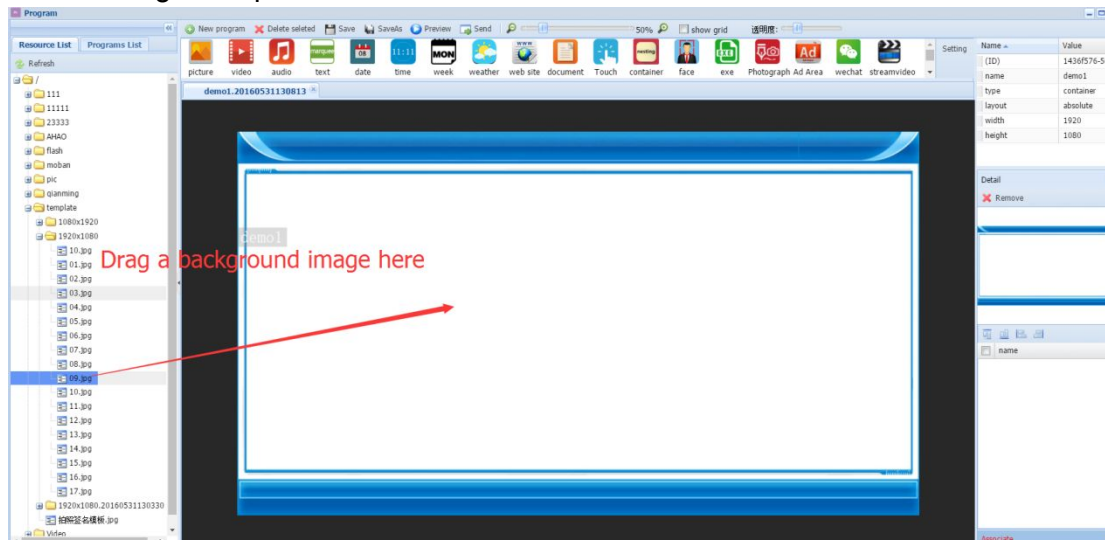
5.1 DSS program editing



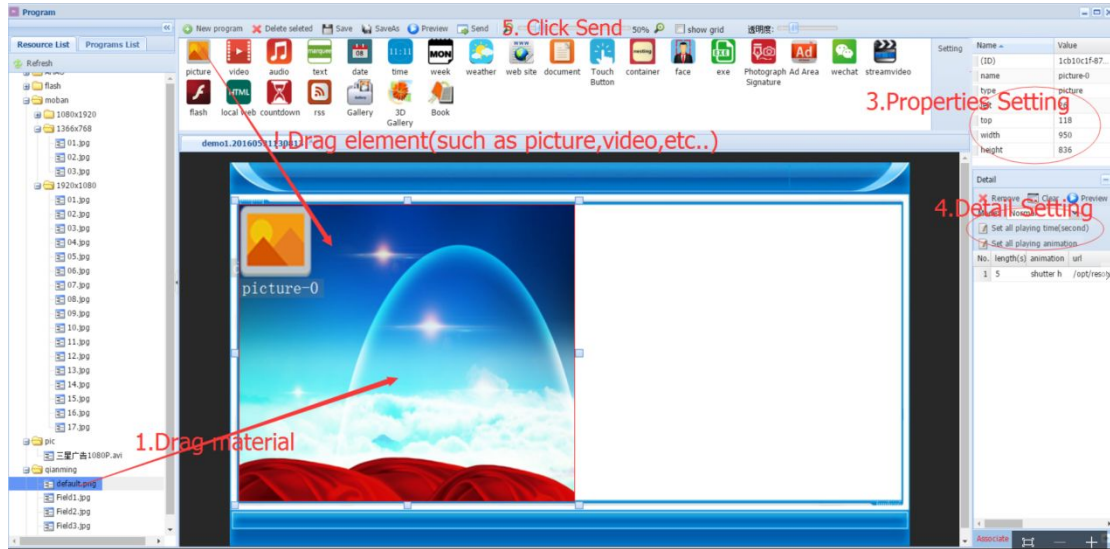
5.1.1 Click icon **Program**, and enter into the program editing interface, click “ New program” and name it.



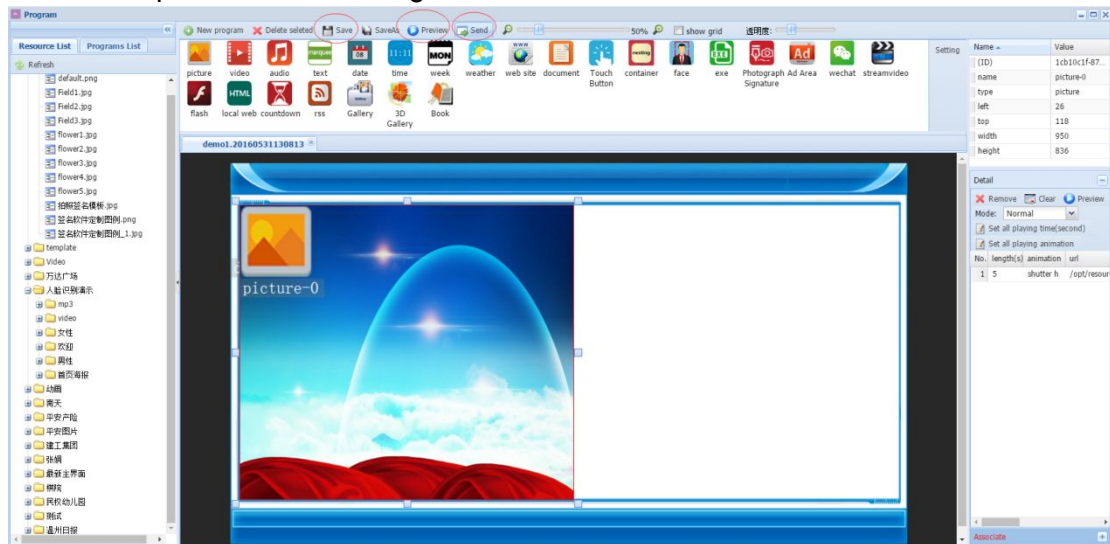
Add a background picture



5.1.2. Select element and drag materials

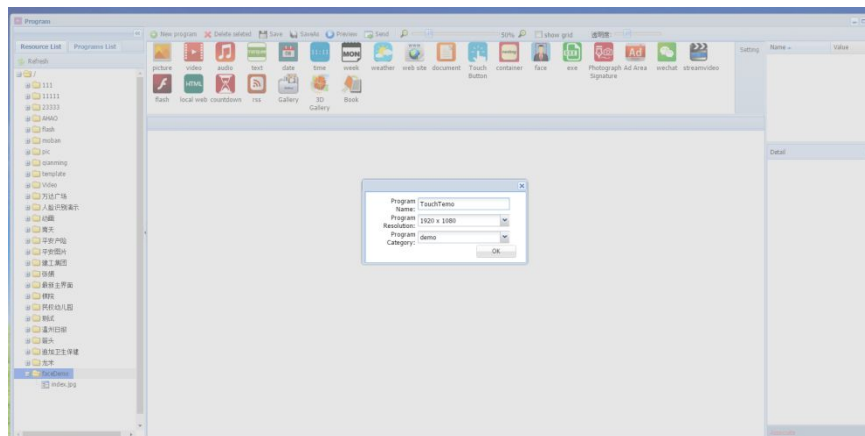


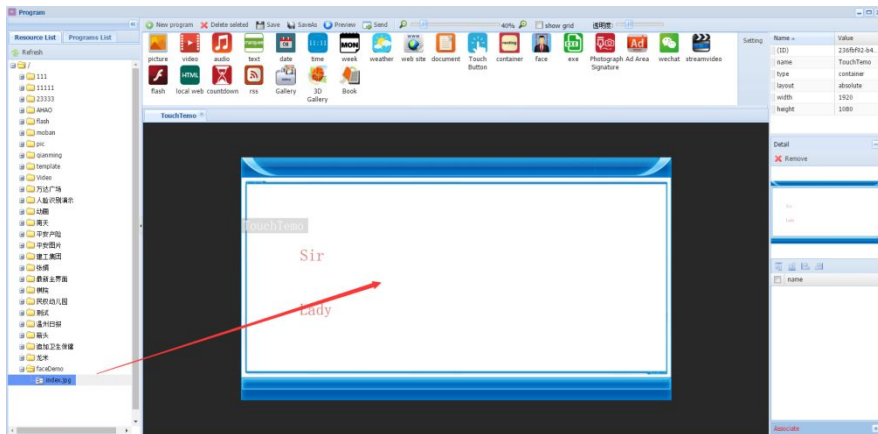
5.1.3 Save, preview and sending.



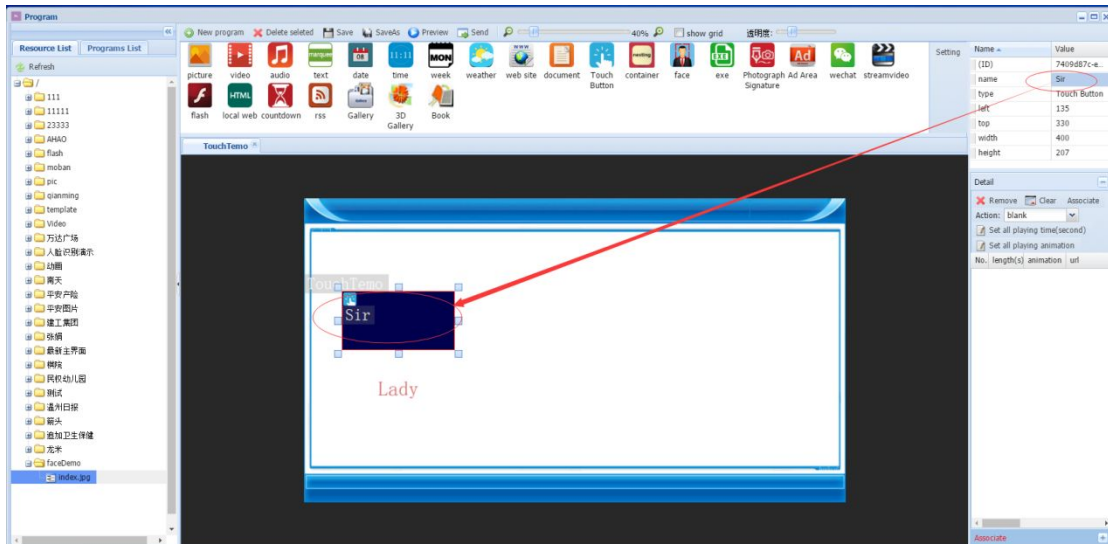
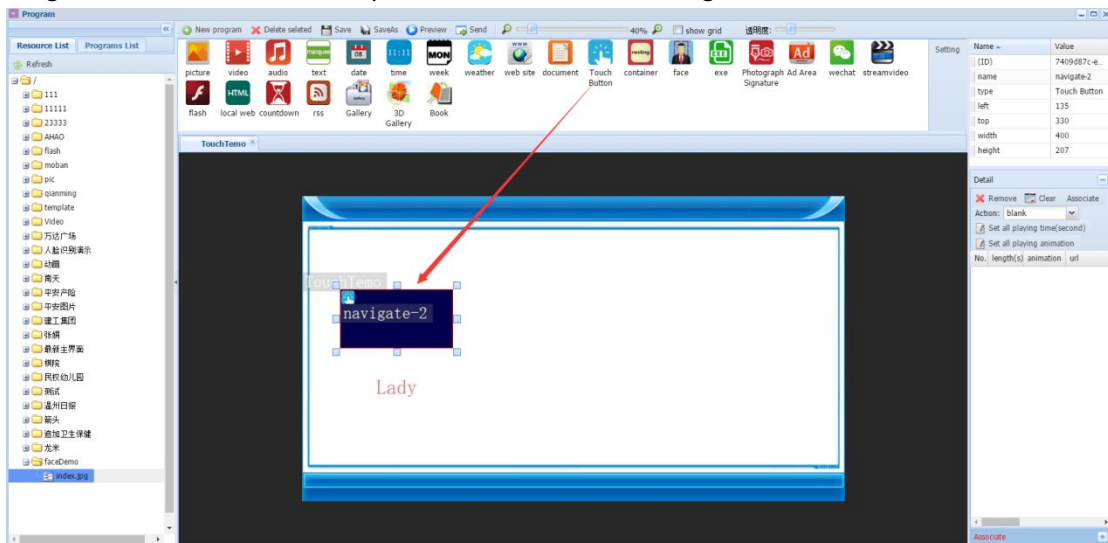
5.2 Interactive program editing.

Create a new program named "TouchDemo", and Drag a background picture

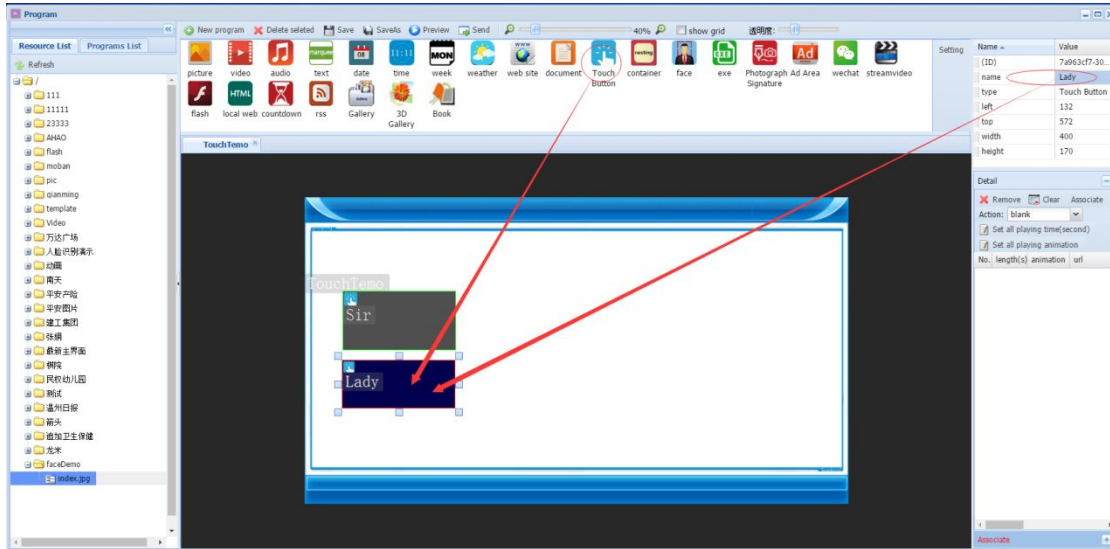




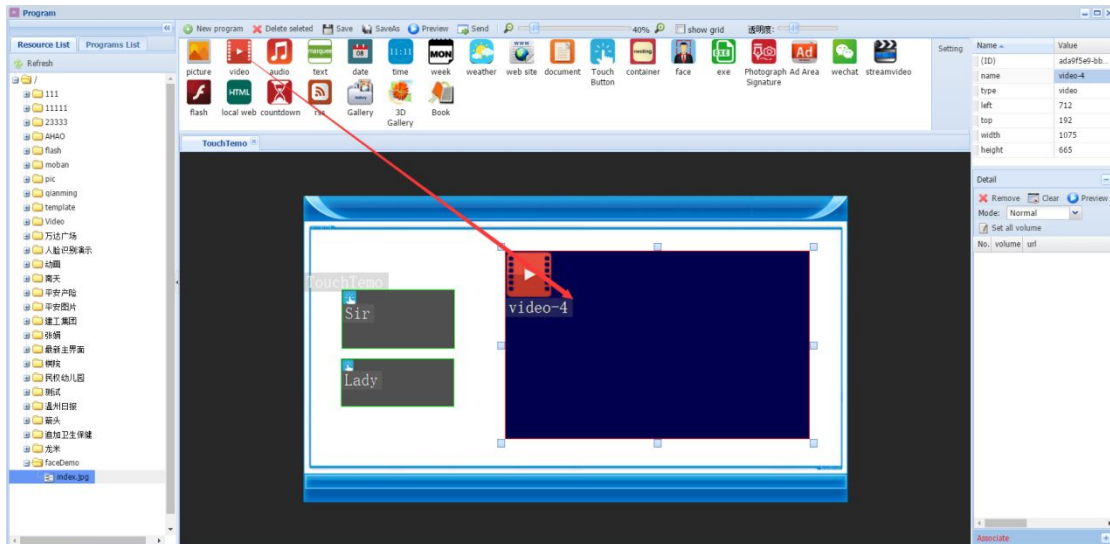
Drag the Touch Button on the top of the Sir, and Rename navigate-2 as " Sir "



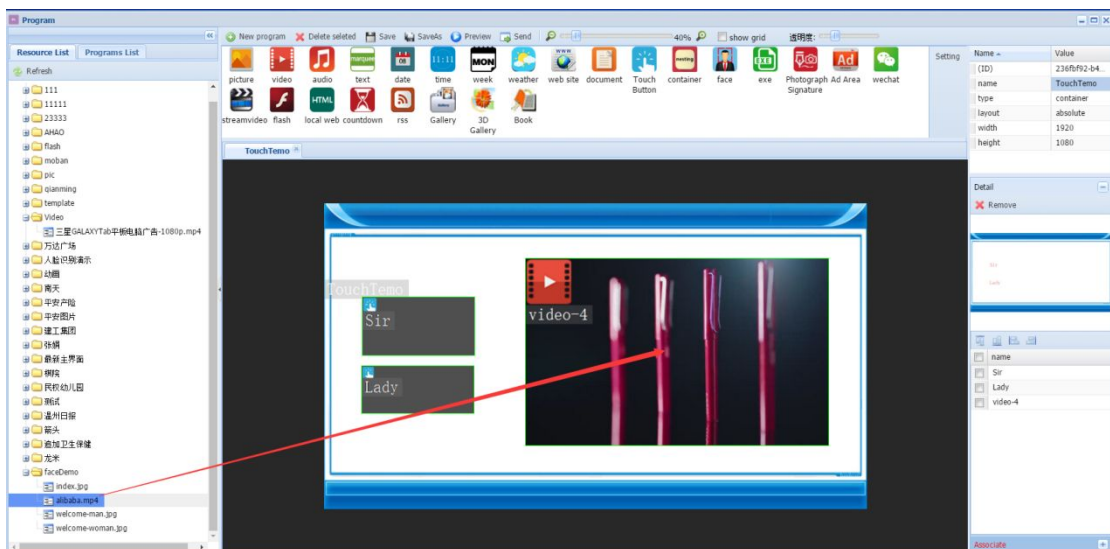
Drag the Touch Button on the top of the Lady, and Rename navigate-3 as " Lady "



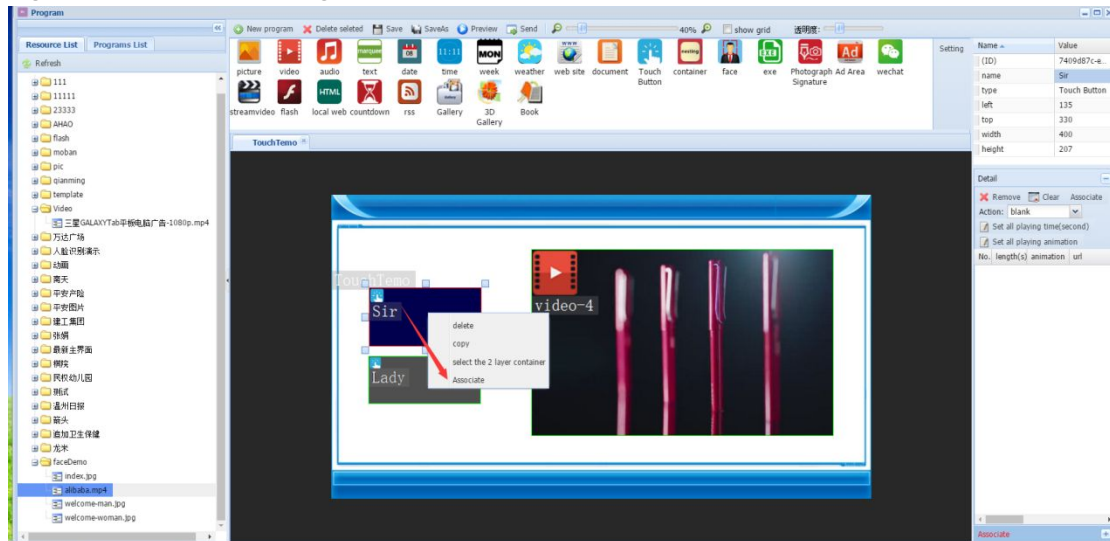
Drag a video element, and adjust the location



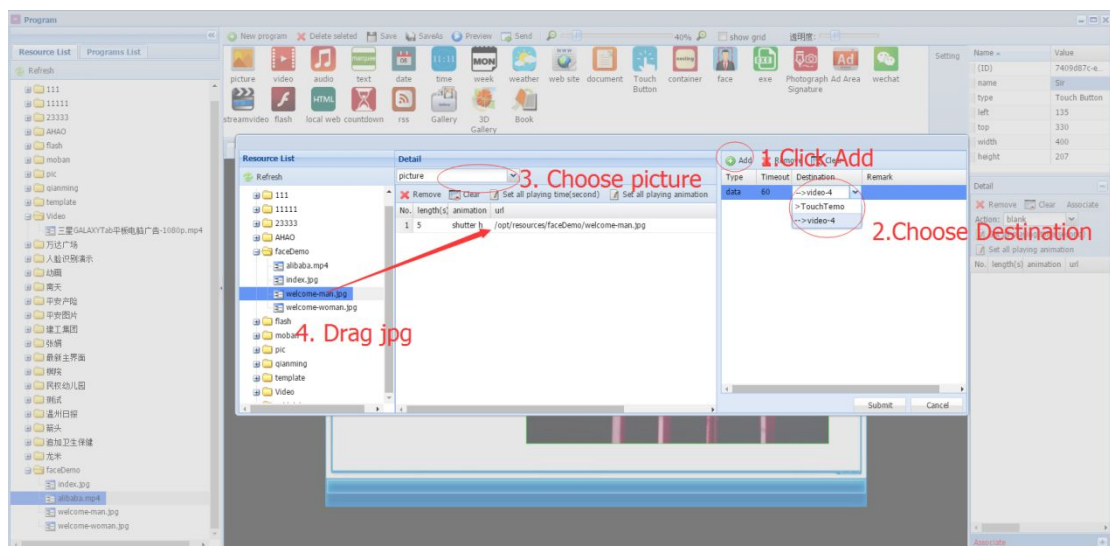
Drag video resource



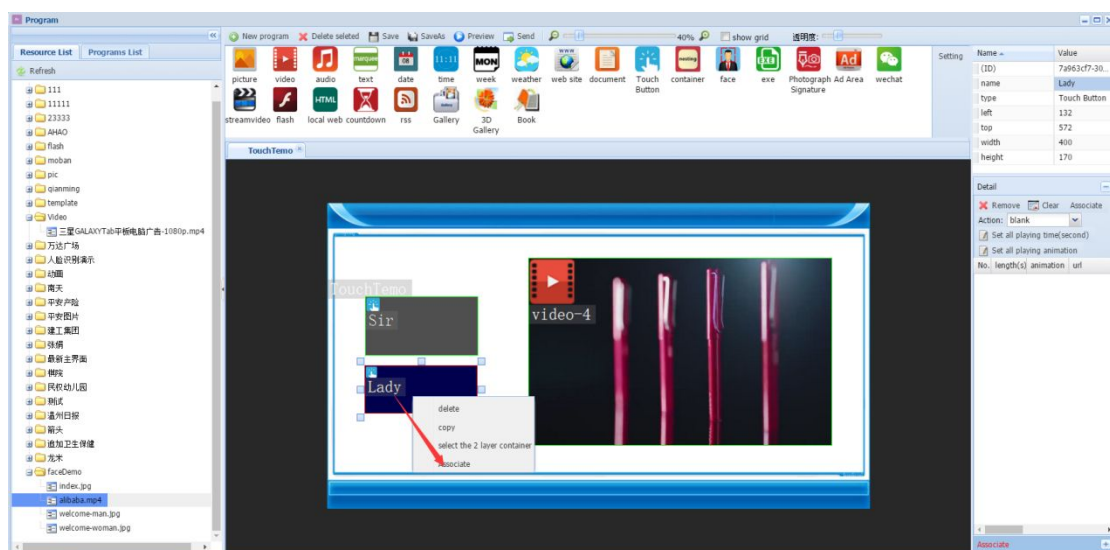
Right Click Sir Touch Button, and Click Associate

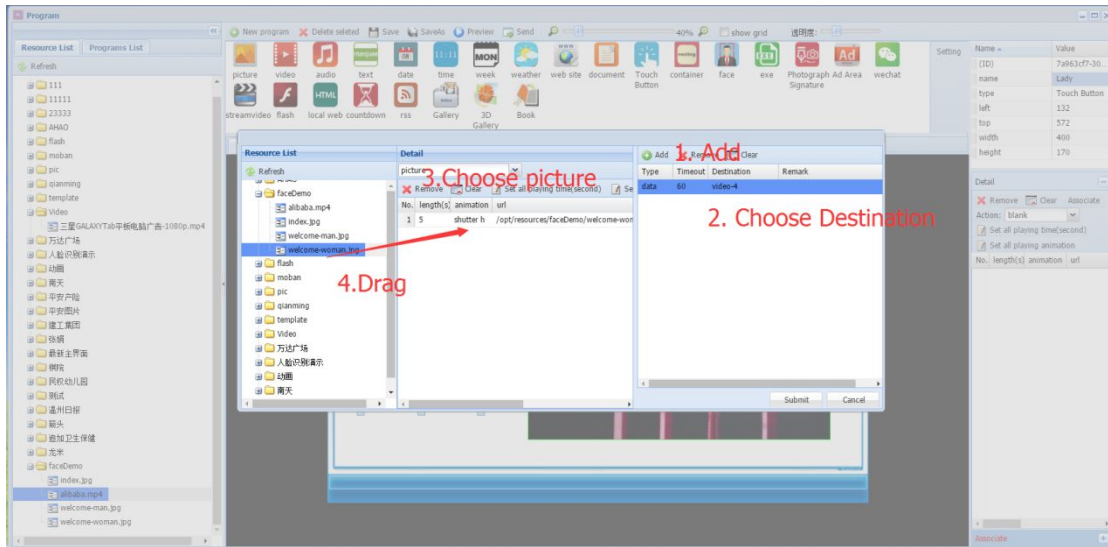


Choose Destination and Drag picture

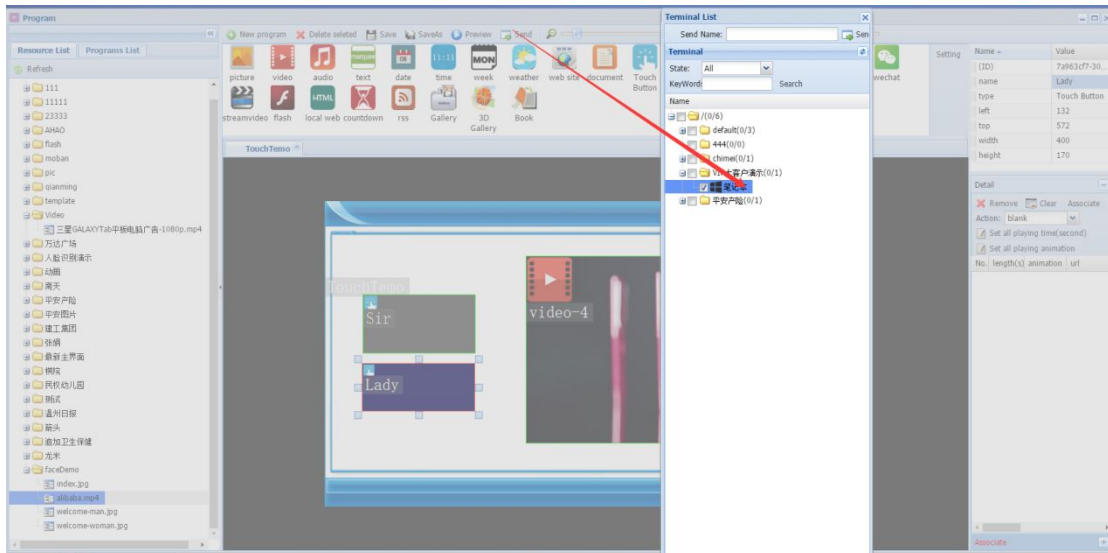


Right Click Lady Touch Button, and Click Associate

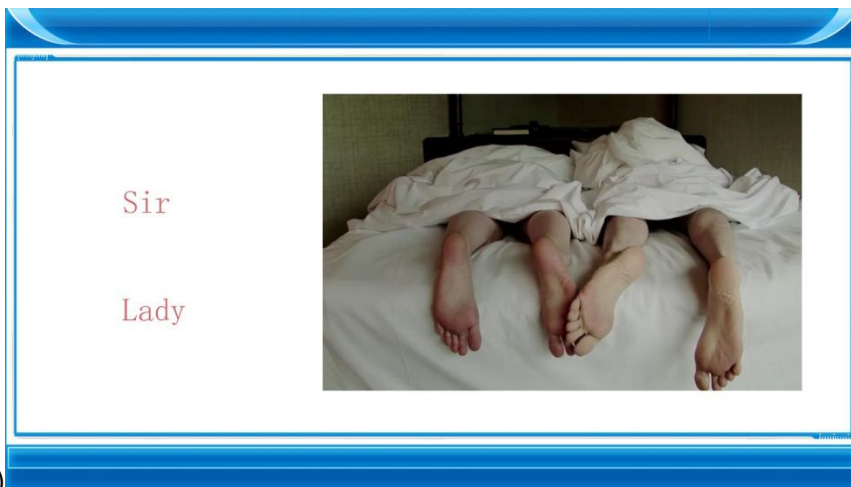




Send the program to the terminal

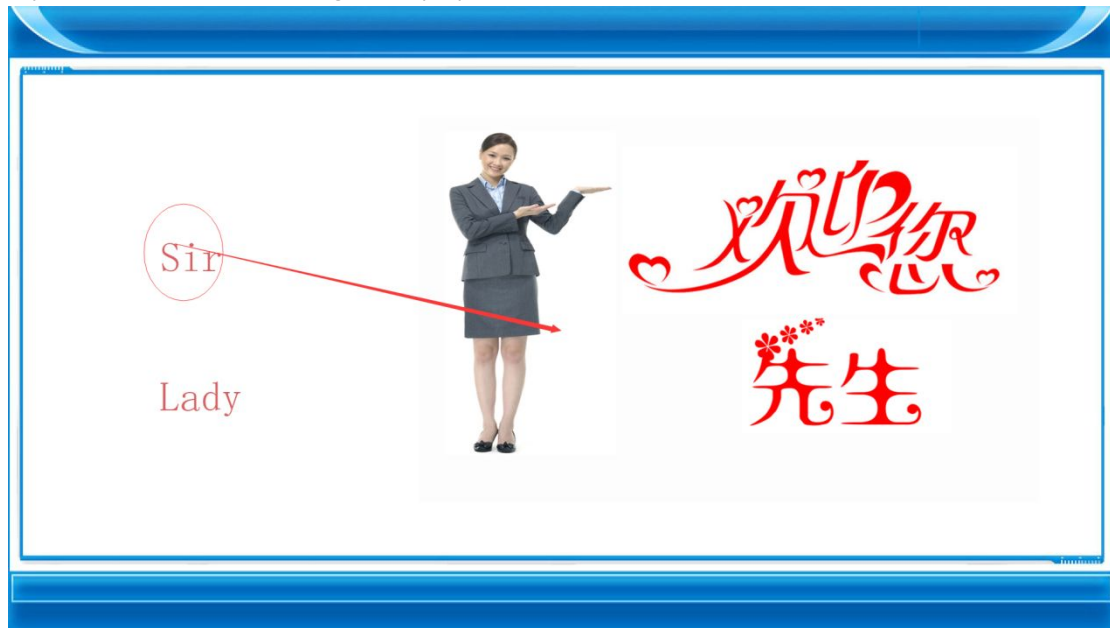


This is Terminal Display and Default Screen is one Video and 2 touch buttons (Sir &



Lady)


If you click on a sir, male image is displayed

















If you click on a Lady, female image is displayed



5.4 Format supporting

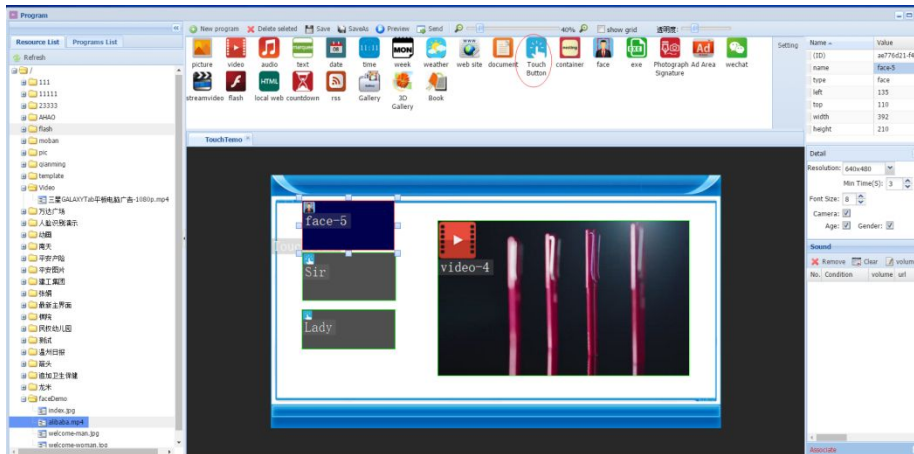
 **Video:** mp4,3gp,rmvb,avi,wmv,mkv,mpg,flv,mov etc.

 **Picture:** png,jpg,jpeg,gif,bmp etc

-  **Audio:** aac, arm, m4a, mp2, mp3, ogg, wav, wma etc
-  **Text:** For rolling or static text.
-  **Date:** Network date and time
-  **Time:** can set the different types of time display
-  **Webpage:** Play the web to support http, https etc protocol
-  **Office:** word, excel, ppt, pdf
-  **Flash:** Flash
-  **Countdown:** It is usually used for the time to take photo (5,4,3,2,1)
-  **Streaming video:** rtsp, http etc protocol
-  **Navigate:** Can be a transparent button on the top layer, can be interactive function, homepage, back to up layer
-  **Container:** Mainly used to built-in programs for time schedule or position
-  **Rss:** RSS file
-  **Web file:** Support html or htm file
statistic
-  **EXE:** Docking any small procedure of windows

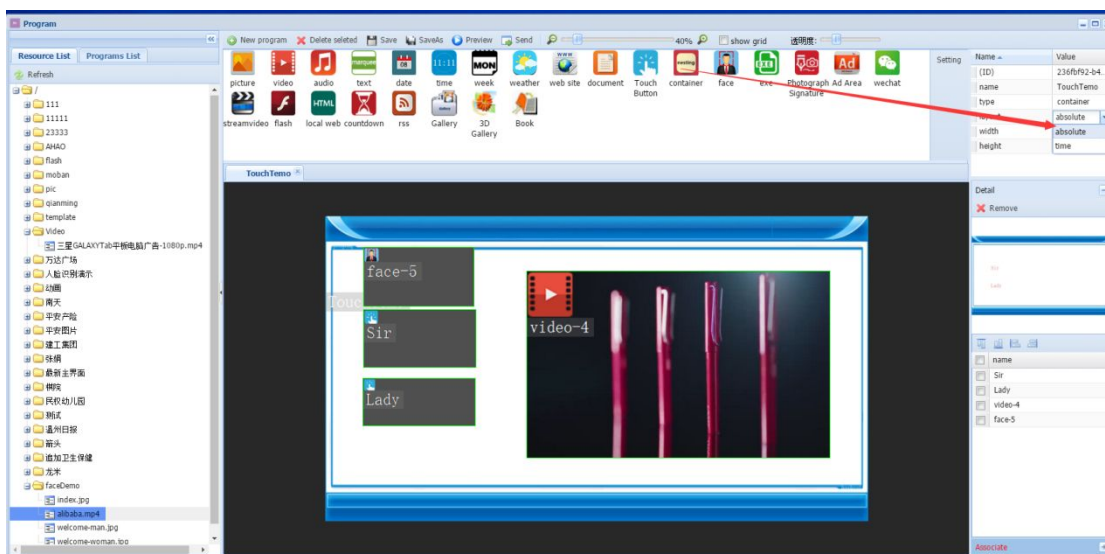
5.6 TouchButton & Container

5.6.1 TouchButton: has features of transparent and is-top, is usually used as a button with the condition of associate.



5.6.2 Container: it is mainly used as built-in other element or program. It has two layout: time layout and absolute layout:

- Absolutely layout: This layout is comparative simple. It mainly determines the position and size of each element. For the overlap part, the upper one will cover the lower one.
- Time layout: This is a senior layout, which can have the programs in template played in sequence. When playing, the height and width of each element is the same of the template. But the playing time and order can be adjusted in [general attribute panel]. This can be set the loop playing function as schedule

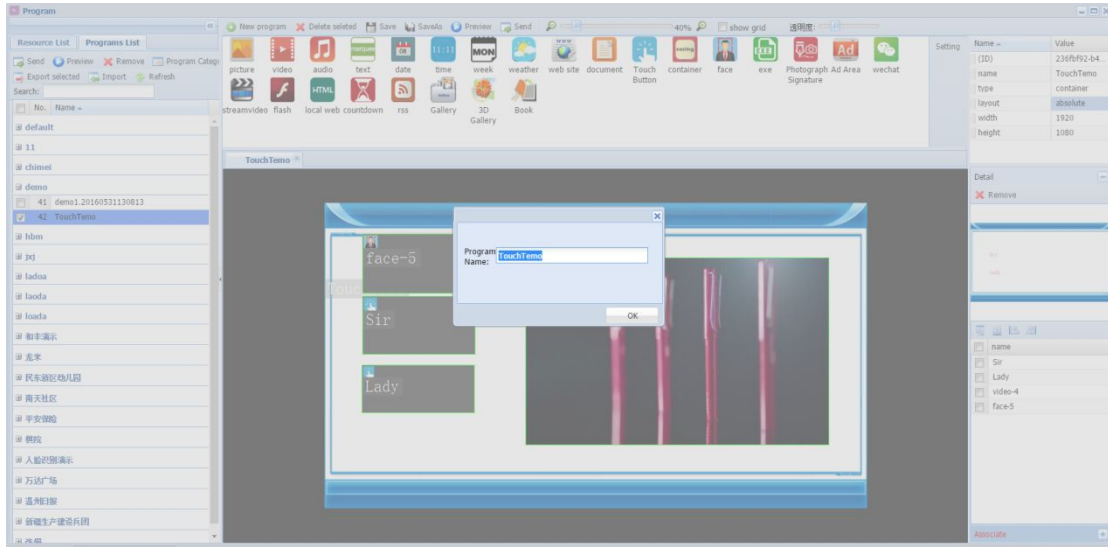


5.7 Program import and export

For some not well network environment, this function can be used widely.

5.7.1 Export programs

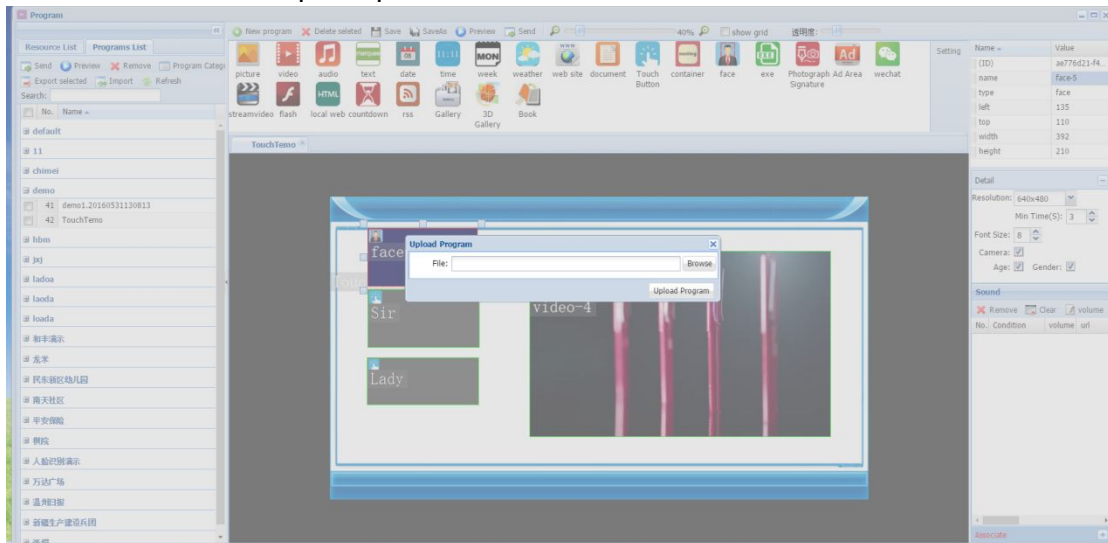
Just follow the steps as picture shows:



And the downloading situation can be checked in the background task icon

5.7.2 Import program

Just follow the steps as picture shows:



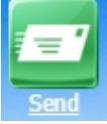
Each time finish the uploading, don't forget to refresh the program list.


6. Schedule, Sending and checked


Schedule can be arranged in 4 methods:

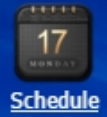
They can realize the function of insert, loop playing, pre-setting schedule etc.

There are three access to arrange the playing schedule: "Send"&"check", "scheduling" &"schedule", "AD management" and "Container" under program. They have different features:

1  Send: one well edited program can be sent to different terminals with setting the playing time. Insert can be set with “priority” selecting.

 Check: Those sent program can be search,check or uncheck,dismiss or delete etc

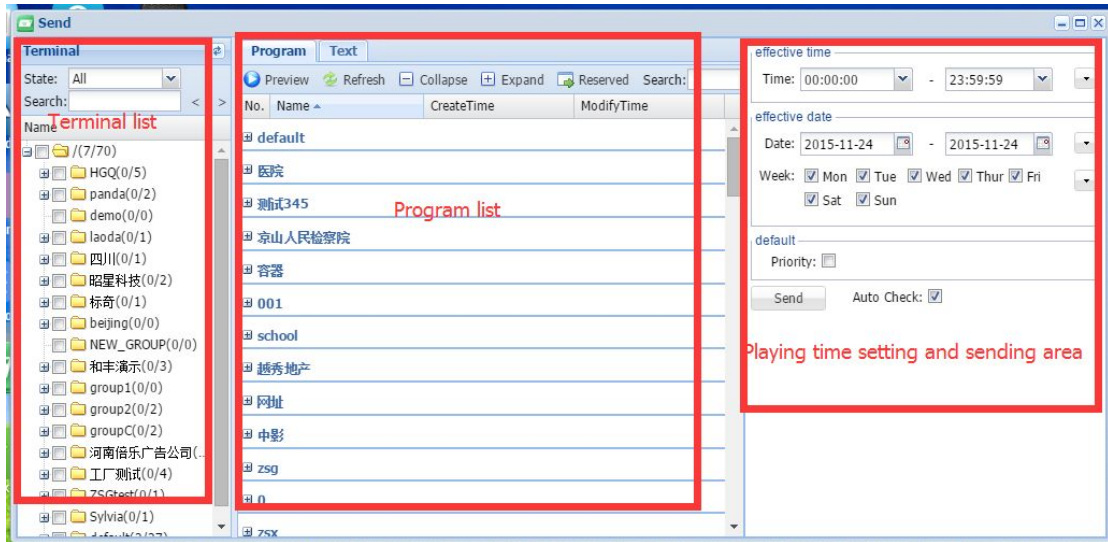
2.  Scheduling:Edit a play list with programs,and send the play list to different terminals

 “Schedule”: it can manage each schedule list edited in “Scheduling”

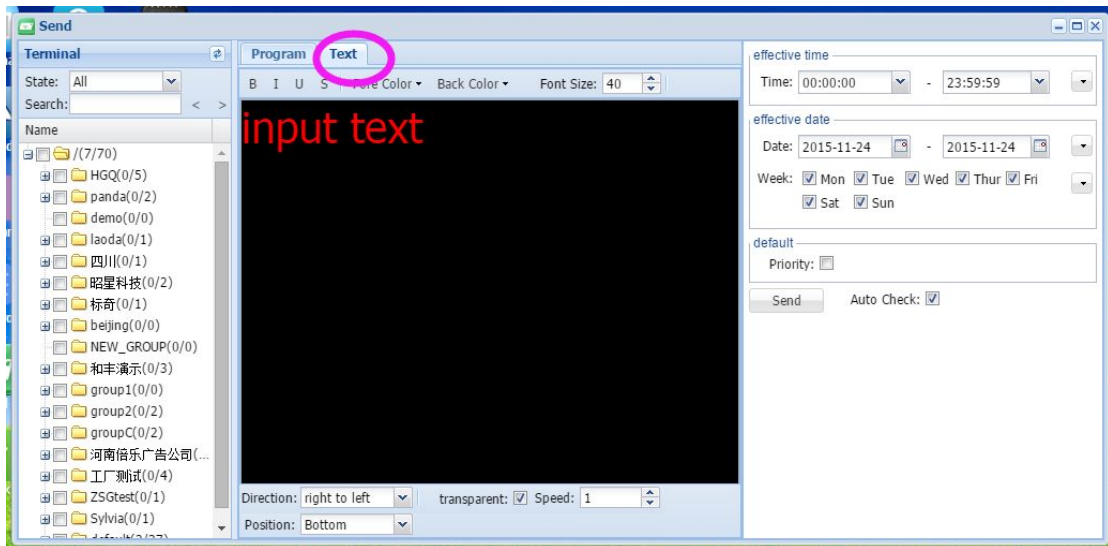
6.1 Send & Checked

Send

Click icon [send] in the desktop of operation platform,we can enter into send interface,which is composed by three parts: The tree-like structure at the left side is terminal displays. All the well edited programs shows in the middle of the interface. The right side is playing time setting and sending information. As seen in the following picture:



If click button “Text” as marked in the following picture,then the inserting text message can be edited here:



Operation steps:

1. Select terminals, single click in check-box to select terminals. In the picture there select two terminals.

Note: * more than 1 terminals can be selected.

* When sending the terminals must be on line.

2. Click button “program”, and select one program.

Note: Only one program can be chose each time.

3. Select right time and sending.

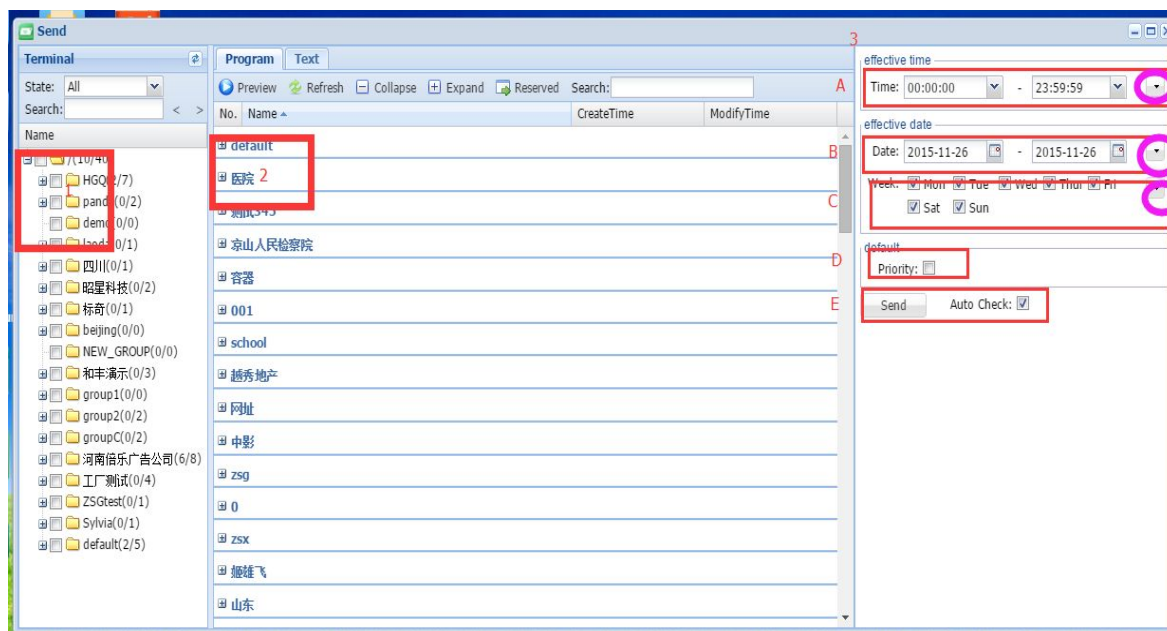
A. Select effective time, the time range is 00:00 ~ 23:59, in the right side is the prompt choosing button, it can help to select the options of “all day”, “next half an hour”, “next one hour” etc.

B. Select effective day,the date range is 00:00 ~ 23:59,in the right side is the fast choosing button,it can help to select the “current week”,”current month”,”current season” etc.

C. Select effective week. The week day choosing must be among the effective dates,then click the prompt choosing button,you can choose 'weekday'.

D. Priority choosing. If many programs sent in one time,then those priority ticked ones will be played first. If there are several programs ticked priority,then the last checked one will be played first.

E.Click button [Sending] to finish.

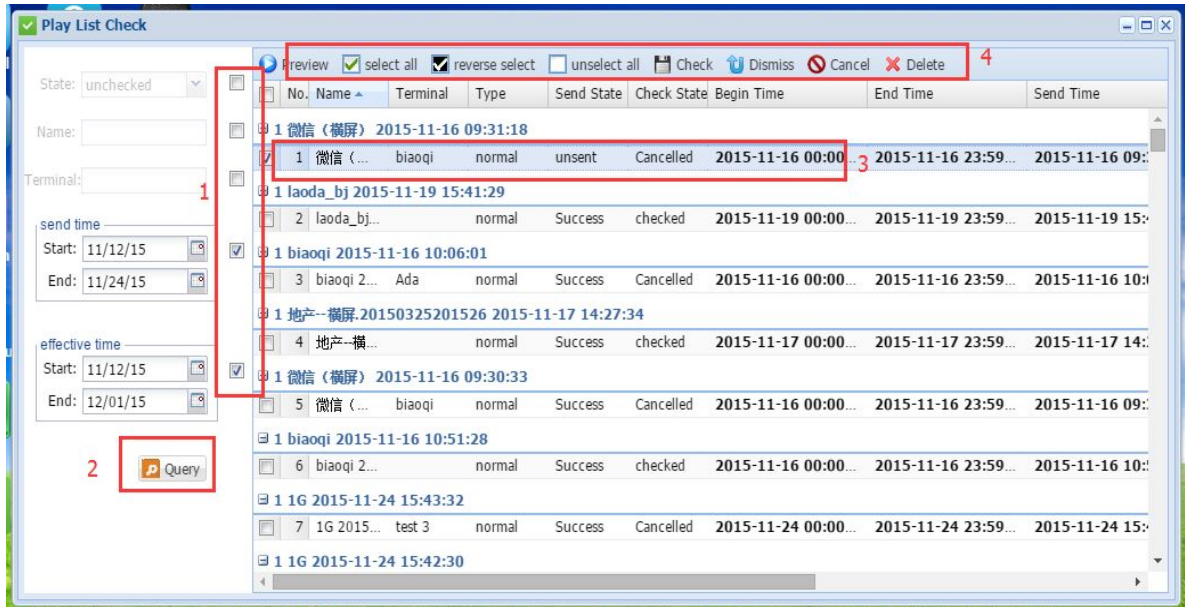


Then one program arranged to different terminals,that comes to be a playlist.

Check

The playlist can be produced after the program sending to terminals. The playlist can checked,dismissed,canceled,deleted etc.

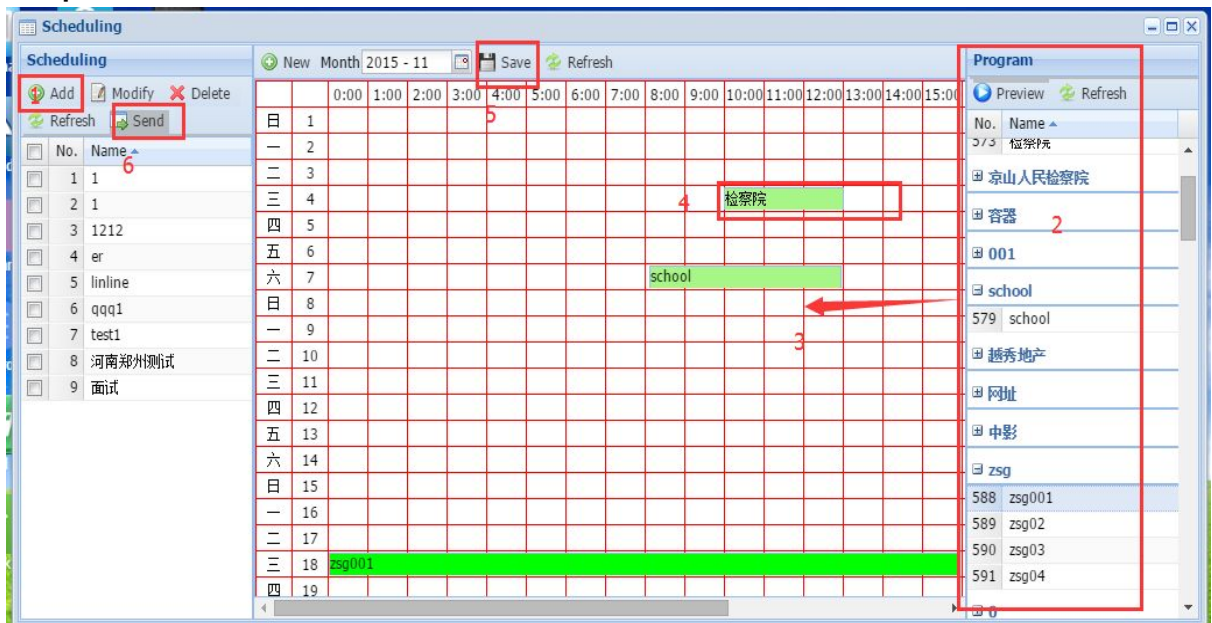
The playlist which sent to terminals can not be played if not checked. The administrator can dismiss or delete the unacceptable program of the playlist. Click icon [check] and pop-up the following window:



1. Checkout the different features
2. Click query
3. Select the program play list
4. Make the operation like check, uncheck or dismiss or delete.

6.2 “Scheduling” and “Schedule”

“Scheduling” can arrange all the programs playing in each terminal one by one. It can pre-set one month schedule for each terminal.



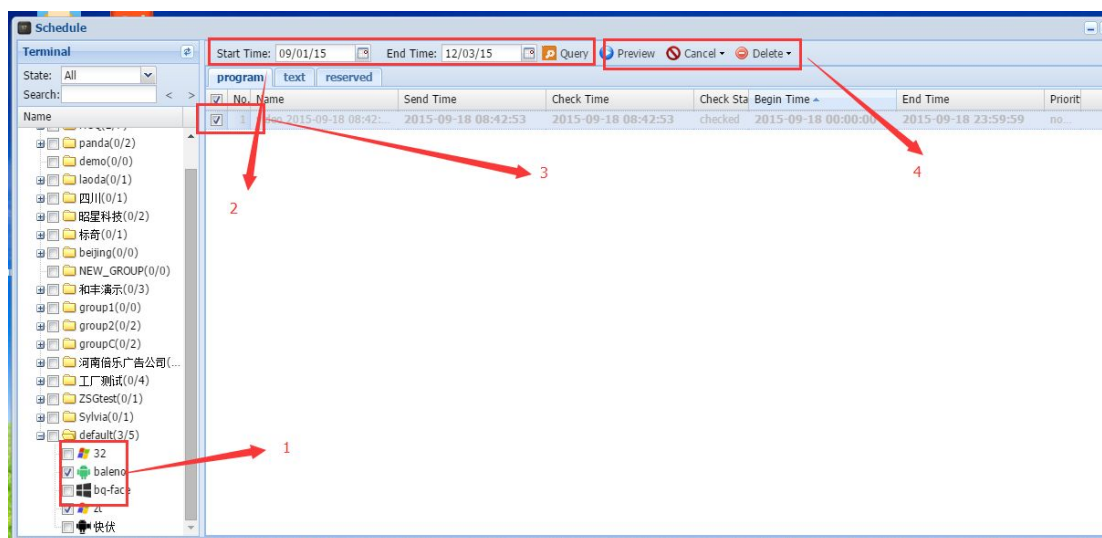
1. Add (create) a schedule
2. Select the program and drag to the time table.
3. Strength or move the green area for each program in time time

4. adjust the program covering the playing time as you request.
5. Click “save”
6. Click “Send” and select one terminal.

“Schedule”: it can manage each schedule list edited in **“Scheduling”**

Operation schedule;

1. Select one terminal
2. Query the schedule list via time range.
3. Select the schedule list
4. Operate like cancel or delete the schedule list.



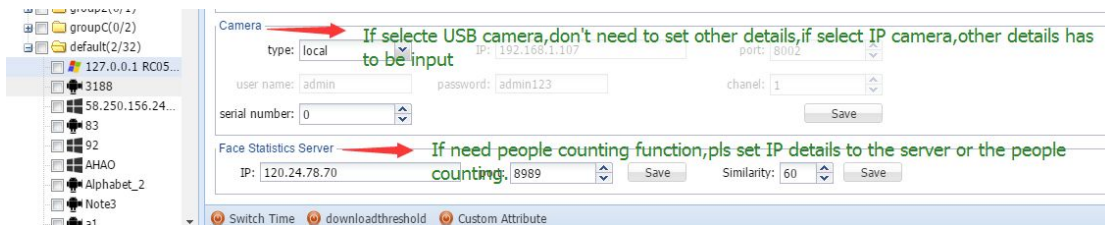
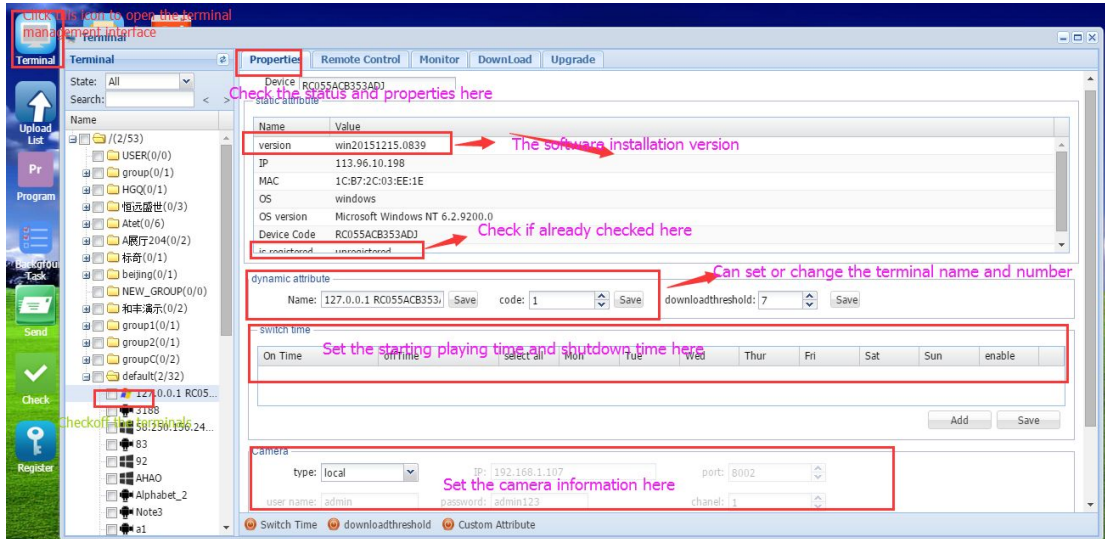
6.4 “Container” under “program ” editing

Refer to “5.6 Navigate & Container”

7. Central control management

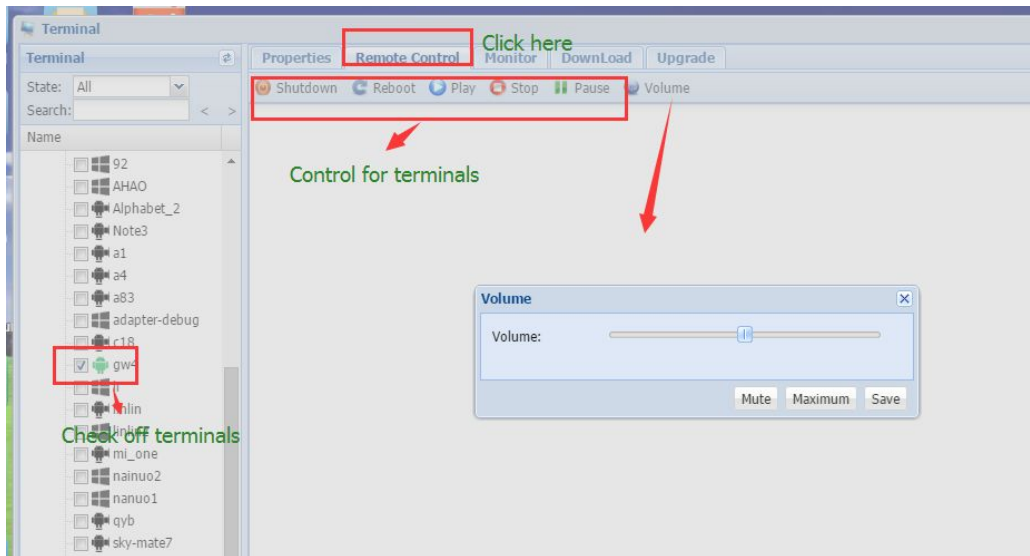
7.1 Terminal management

7.1.1 Check the terminal information



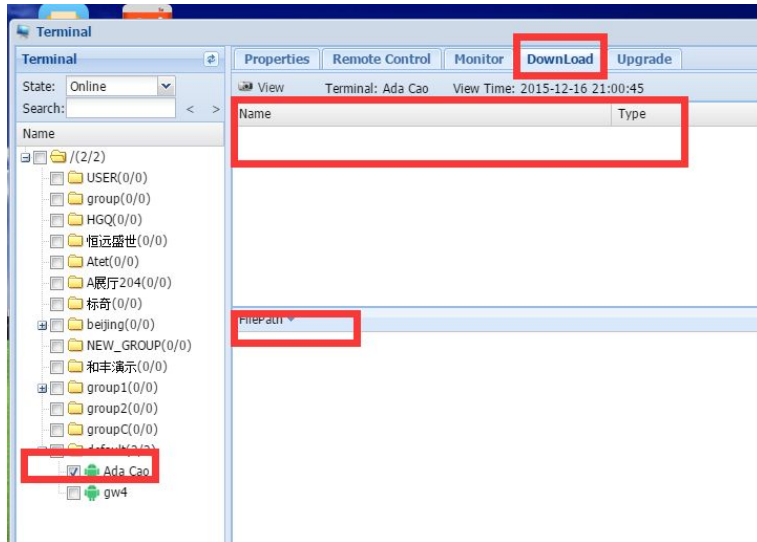
7.1.2 Remote control terminals

Select terminal, and click "Remote Control", then you can remote shutdown, re-boot, and can control the program playing, stop or pause. You can also adjust the volume here.



How to check the programs download situation?

After sending the program to terminals, you can check if it already download here: click "download" in the top menu of terminal. Especially, when the program have not shown in terminal after sending long time, you can follow this way to check if sending successfully.



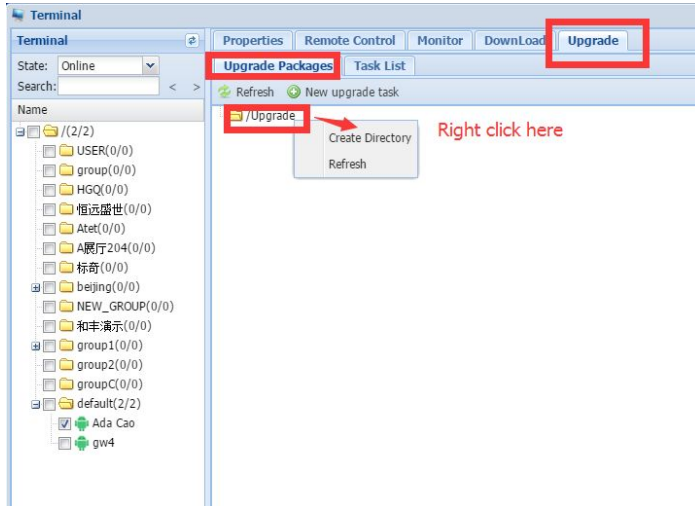
How shall I know what is playing in the terminal?

Select right terminal,click “monitor’ and click screen-shot,Then it take a picture of the terminal screen.



How to upgrade the apk of terminal in remote?

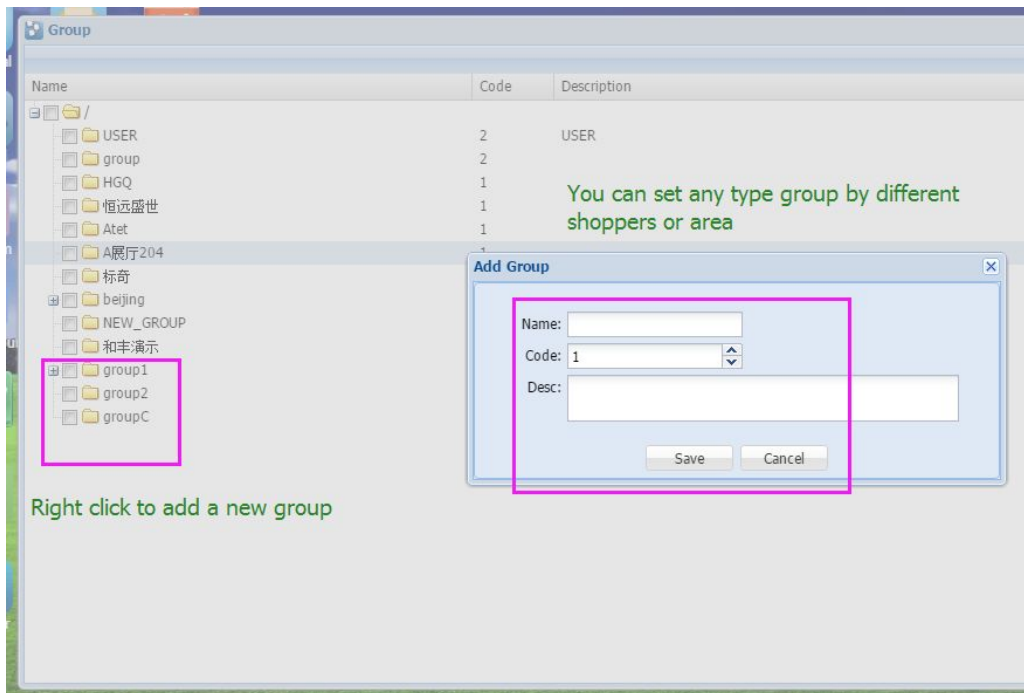
Create a upgrade directory--upload the new apk to this directory--Select the new apk--checkoff terminal---Click “new upgrade task”



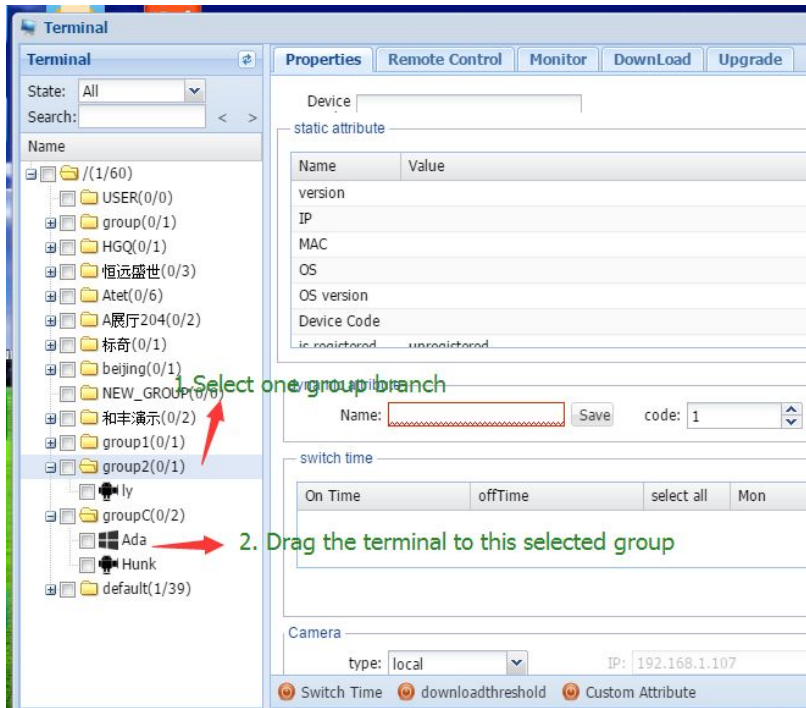
7.1 Group



Click icon group and enter into group setting. It help to realize the terminal controlling in groups, not one by one.

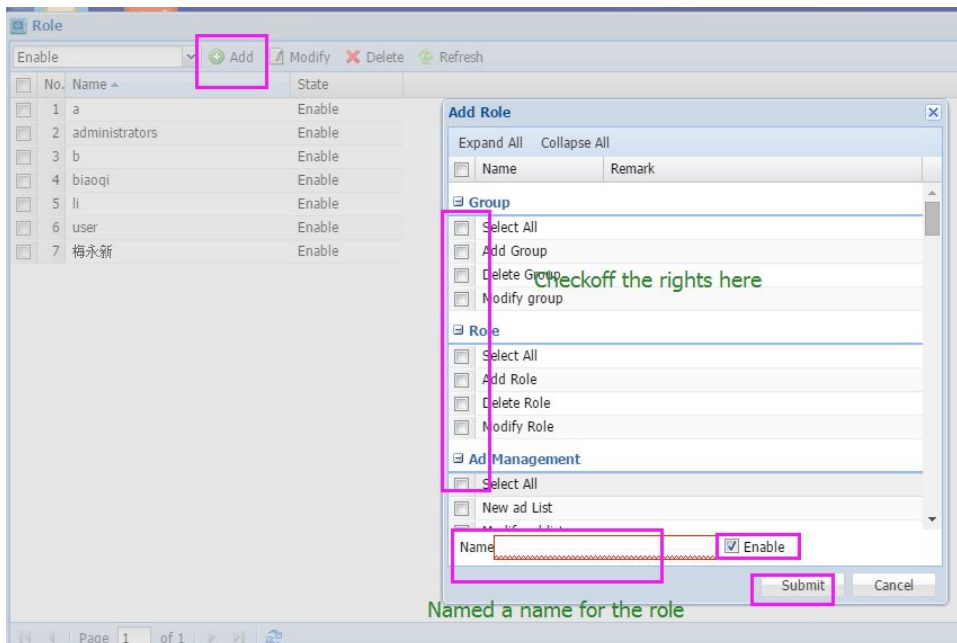


After group file established, you can go to the terminal icon and drag the terminals to different groups:



7.2.1 Role

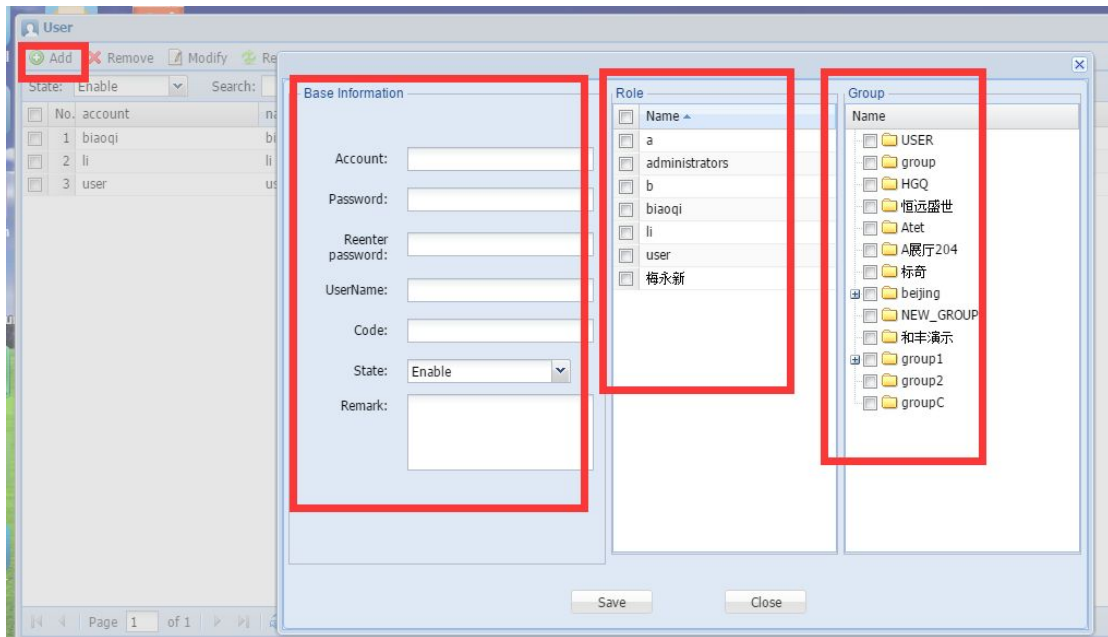
Under Role operation: Just mainly select the function for this role.



7.2.2 User

Under User operation: Just set the user with different group and role, having the user

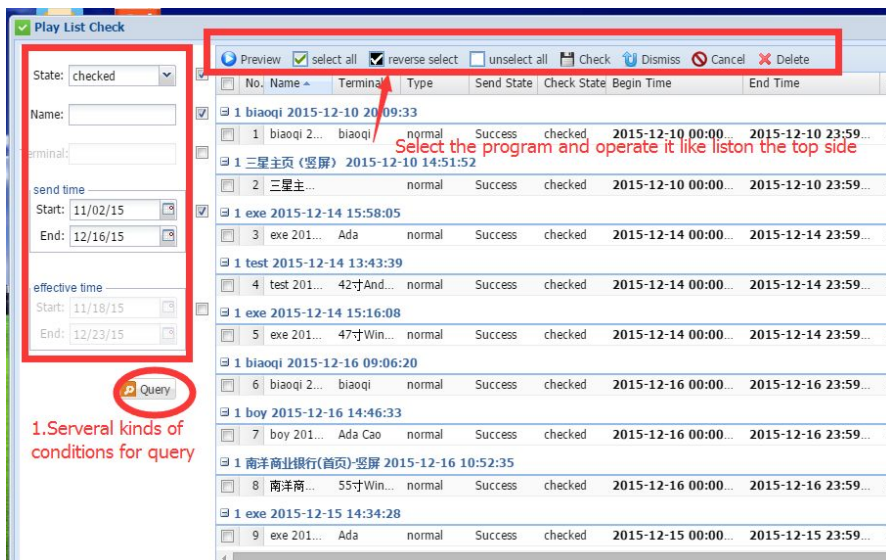
has different limitation and rights.



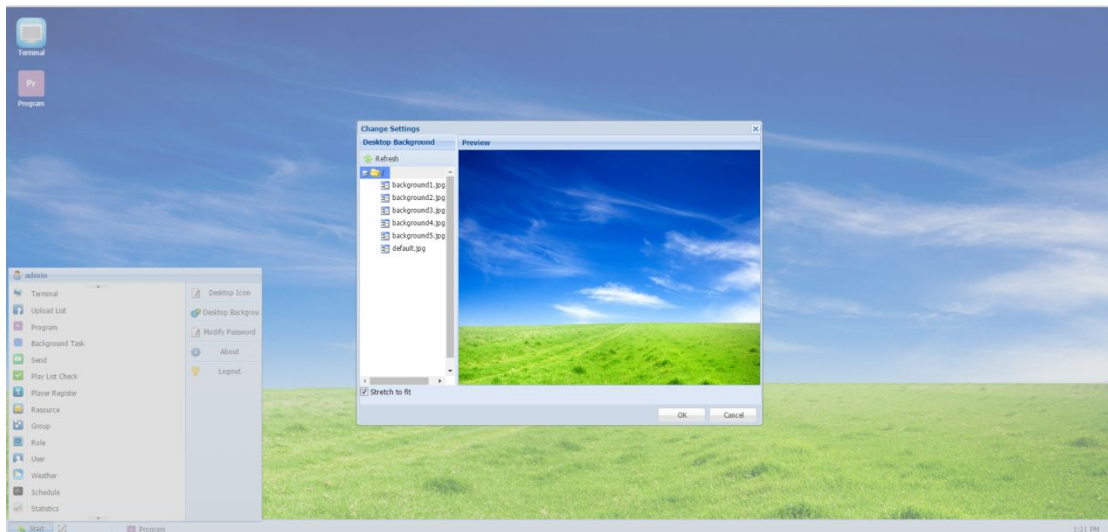
Usually, this function is used for the management with different duties like administrator, operator and monitor.

7.2.3 Check

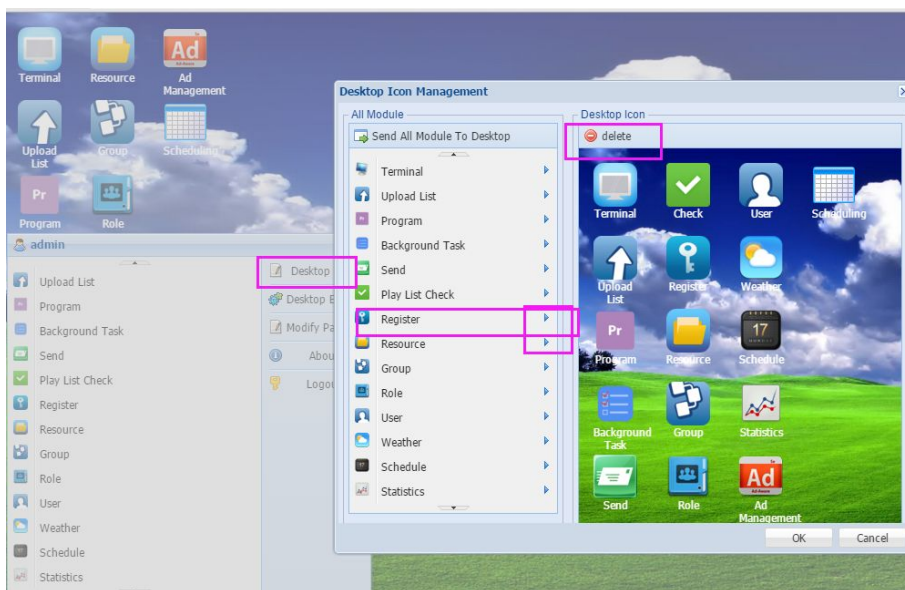
Under check operation, program can be monitored, checked or double confirmed by the defined user. It can ensure the security and accuracy of the public information.



7.3 Desktop background setting



7.4 Desktop icon setting

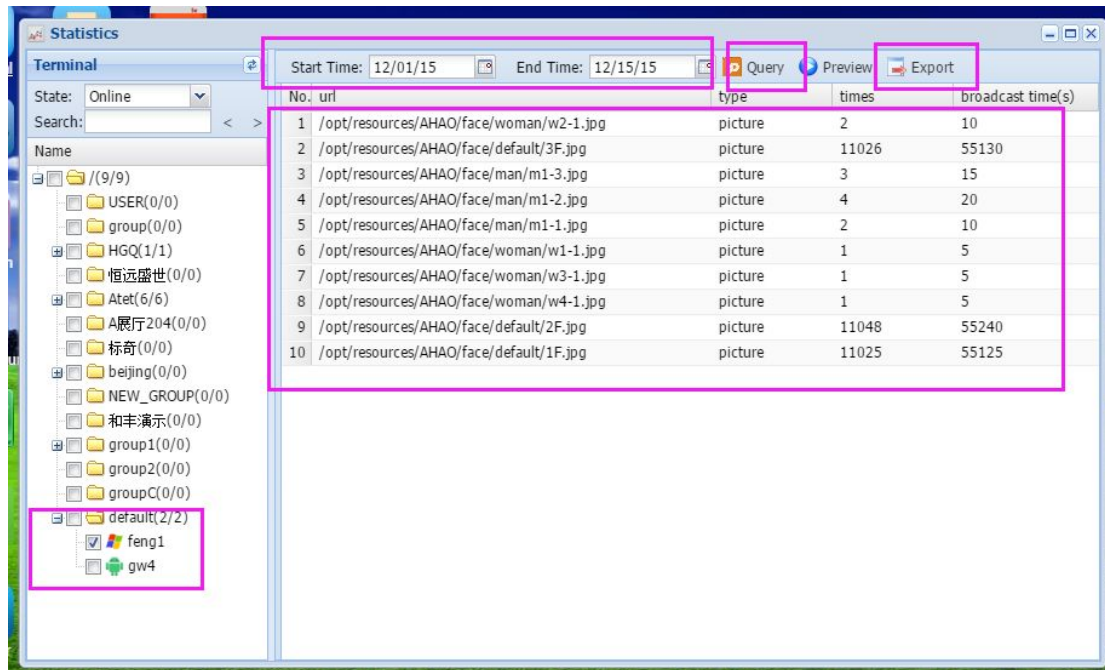


The icon can be added to the desktop, or be deleted from the desktop.

7.5 Playing Statistic



Click icon [Statistics](#), and you can towards one terminals, it can query, preview, and export the program playing records.



8. Trouble shooting

8.1 After login,the terminal is grey color (not online)

Answer: 1. Have your server online

2. Check if IP address set in the terminal are right one.
3. Have your terminal on network
4. Close your firewall
5. Set the 6100 or 6101 port in your network routine to be opened.

8.2 Use USB storage to import program,failed

Answer: Pls shut down the network to disconnect to the server